

THE COVE

DUBAI CREEK HARBOUR

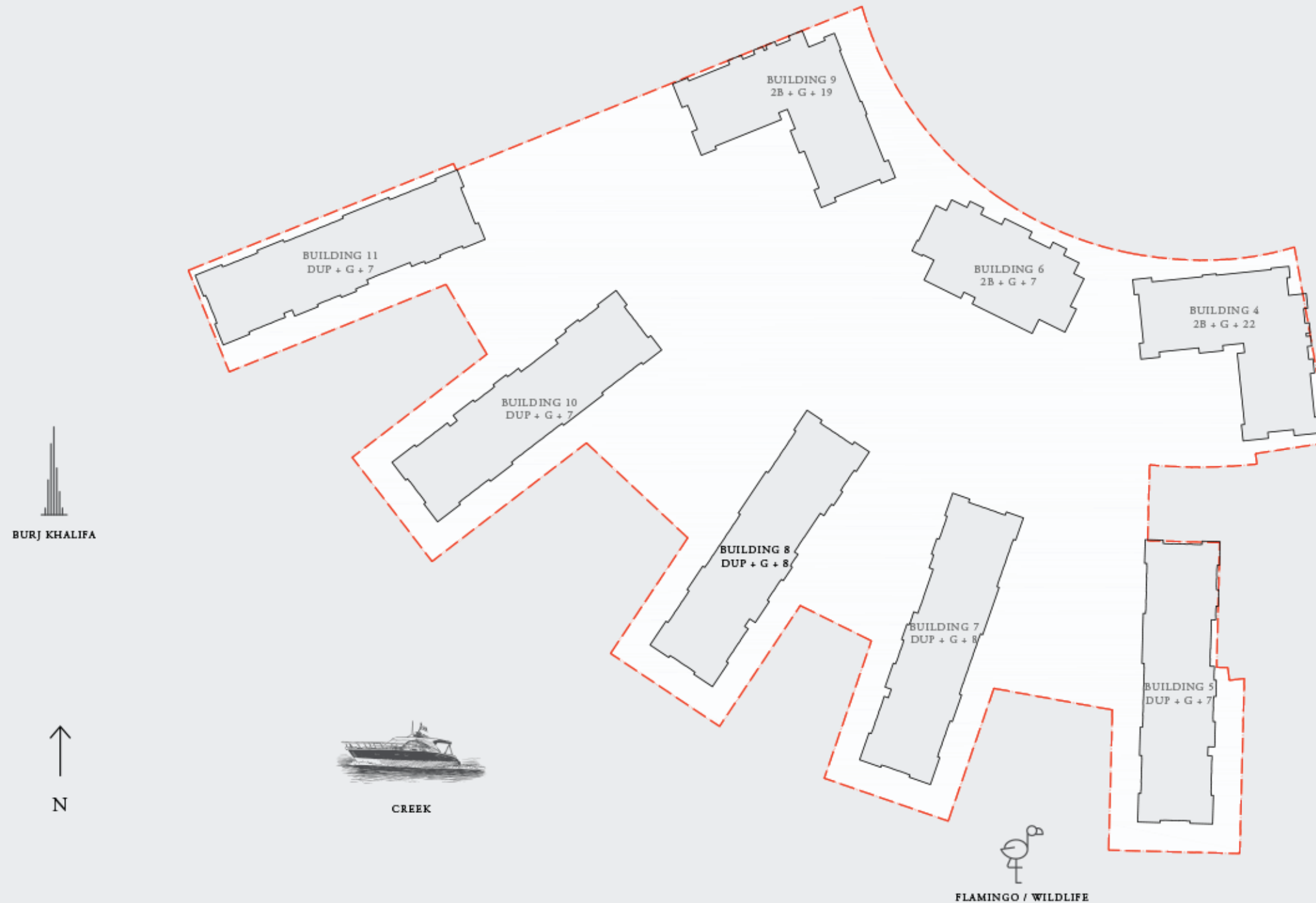
FLOOR PLANS

BUILDING 4



PROPERTY / CLUSTER NAME

MASSING PLAN



FLOOR PLAN 1. All dimensions are in imperial and metric, and measured from finish to finish excluding construction tolerances. 2. All materials, dimensions, and drawings are approximate only. 3. Information is subject to change without notice, at developer's absolute discretion. 4. Actual area may vary from the stated area. 5. Drawings not to scale. 6. All images used are for illustrative purposes only and do not represent the actual size, features, specifications, fittings, and furnishings. 7. The developer reserves the right to make revisions / alterations, at it's absolute discretion, without any liability whatsoever.

THE COVE

DUBAI CREEK HARBOUR

BUILDING 4 2 BEDROOM

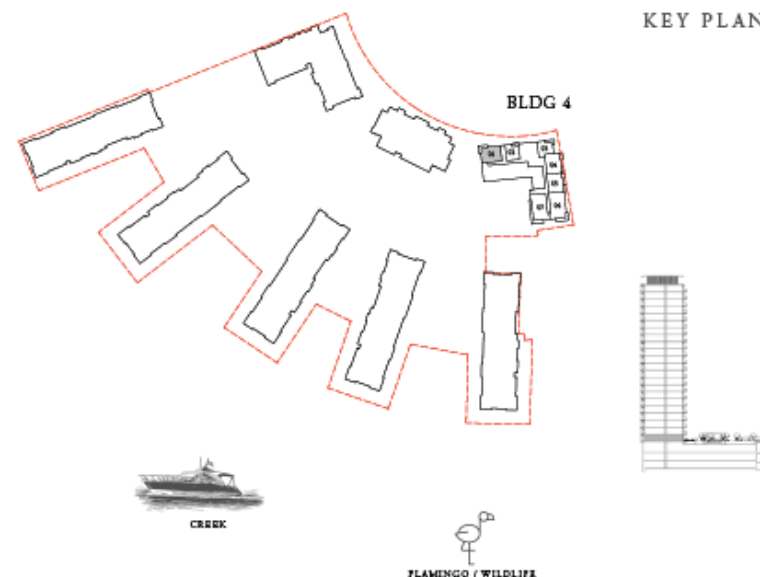
LEVEL 01

UNIT 01

SUITE AREA	1018.05 SQ.FT.	94.58 SQ.M.
BALCONY AREA	120.88 SQ.FT.	11.23 SQ.M.
TOTAL AREA	1138.93 SQ.FT.	105.81 SQ.M.



KEY PLAN



BURJ KHALIFA



N



CREEK



FLAMINGO / WILDLIFE

FLOOR PLAN 1. All dimensions are in imperial and metric, and measured from finish to finish excluding construction tolerances. 2. All materials, dimensions, and drawings are approximate only. 3. Information is subject to change without notice, at developer's absolute discretion. 4. Actual area may vary from the stated area. 5. Drawings not to scale. 6. All images used are for illustrative purposes only and do not represent the actual size, features, specifications, fittings, and furnishings. 7. The developer reserves the right to make revisions / alterations, at its absolute discretion, without any liability whatsoever.

EMAAR

THE COVE

DUBAI CREEK HARBOUR

BUILDING 4 1 BEDROOM

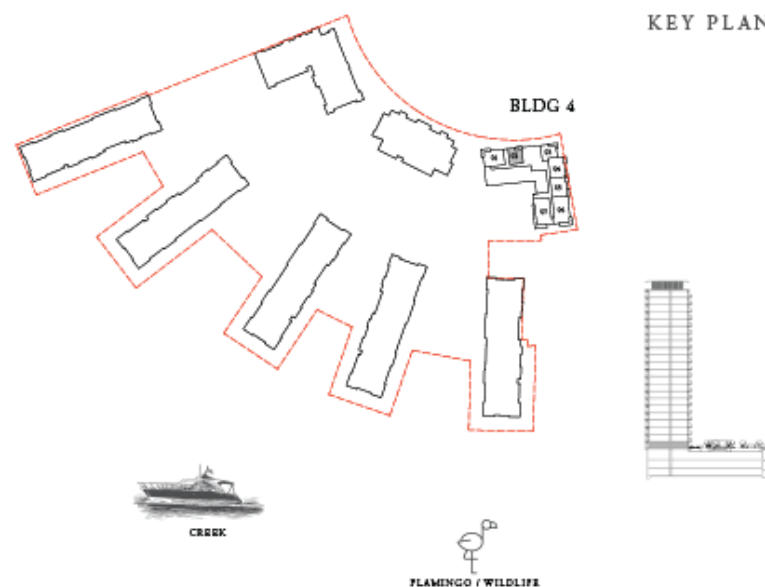
LEVEL 01

UNIT 02

SUITE AREA	660.04 SQ.FT.	61.32 SQ.M.
BALCONY AREA	78.15 SQ.FT.	7.26 SQ.M.
TOTAL AREA	738.19 SQ.FT.	68.58 SQ.M.



KEY PLAN



FLOOR PLAN 1. All dimensions are in imperial and metric, and measured from finish to finish excluding construction tolerances. 2. All materials, dimensions, and drawings are approximate only. 3. Information is subject to change without notice, at developer's absolute discretion. 4. Actual area may vary from the stated area. 5. Drawings not to scale. 6. All images used are for illustrative purposes only and do not represent the actual size, features, specifications, fittings, and furnishings. 7. The developer reserves the right to make revisions / alterations, at it's absolute discretion, without any liability whatsoever.

EMAAR

THE COVE

DUBAI CREEK HARBOUR

BUILDING 4 1 BEDROOM

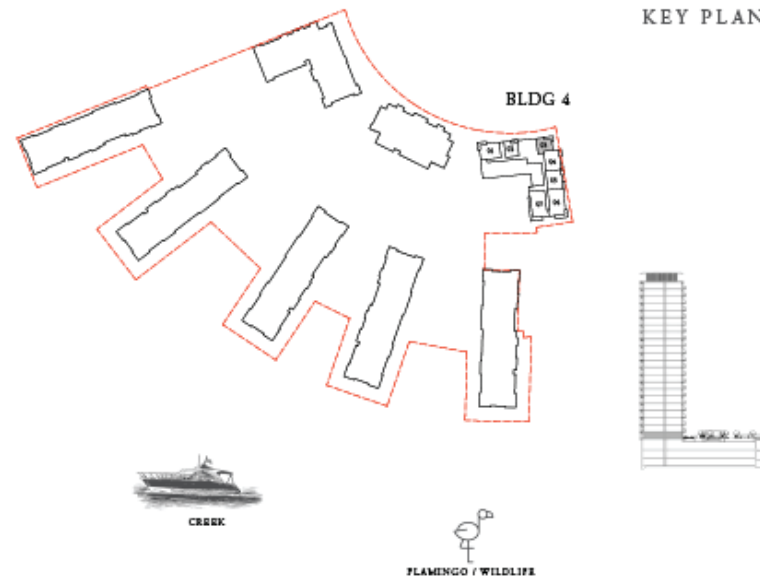
LEVEL 01

UNIT 03

SUITE AREA	674.57 SQ.FT.	62.67 SQ.M.
BALCONY AREA	96.34 SQ.FT.	8.95 SQ.M.
TOTAL AREA	770.91 SQ.FT.	71.62 SQ.M.



KEY PLAN



FLOOR PLAN 1. All dimensions are in imperial and metric, and measured from finish to finish excluding construction tolerances. 2. All materials, dimensions, and drawings are approximate only. 3. Information is subject to change without notice, at developer's absolute discretion. 4. Actual area may vary from the stated area. 5. Drawings not to scale. 6. All images used are for illustrative purposes only and do not represent the actual size, features, specifications, fittings, and furnishings. 7. The developer reserves the right to make revisions / alterations, at it's absolute discretion, without any liability whatsoever.

EMAAR

THE COVE

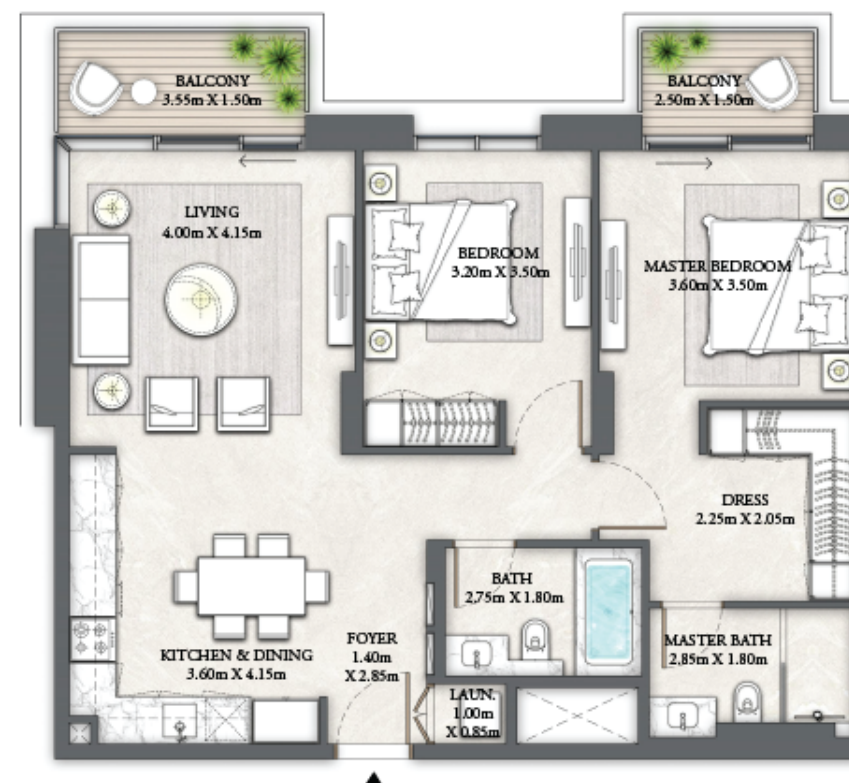
DUBAI CREEK HARBOUR

BUILDING 4 2 BEDROOM

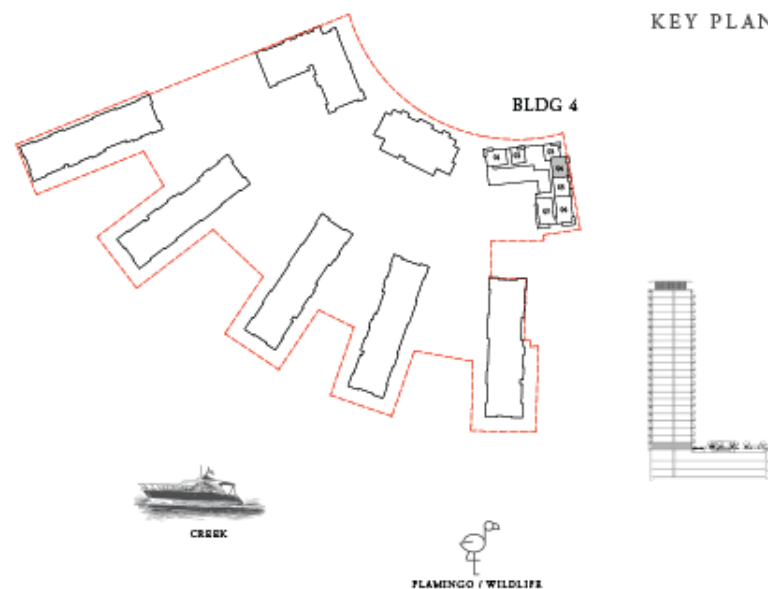
LEVEL 01

UNIT 04

SUITE AREA	1007.18 SQ.FT.	93.57 SQ.M.
BALCONY AREA	99.46 SQ.FT.	9.24 SQ.M.
TOTAL AREA	1106.64 SQ.FT.	102.81 SQ.M.



KEY PLAN



FLOOR PLAN 1. All dimensions are in imperial and metric, and measured from finish to finish excluding construction tolerances. 2. All materials, dimensions, and drawings are approximate only. 3. Information is subject to change without notice, at developer's absolute discretion. 4. Actual area may vary from the stated area. 5. Drawings not to scale. 6. All images used are for illustrative purposes only and do not represent the actual size, features, specifications, fittings, and furnishings. 7. The developer reserves the right to make revisions / alterations, at it's absolute discretion, without any liability whatsoever.

EMAAR

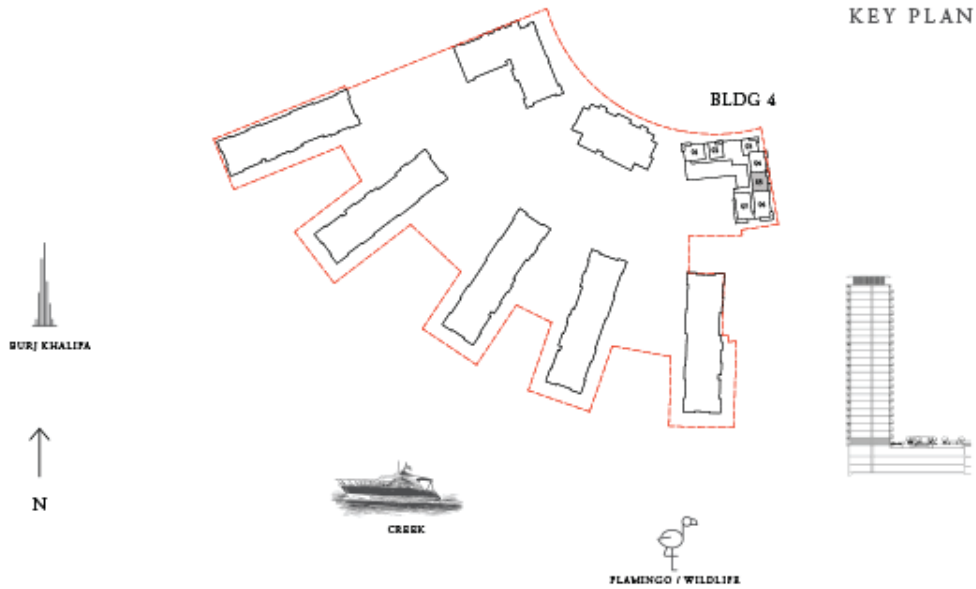
THE COVE

DUBAI CREEK HARBOUR

BUILDING 4 2 BEDROOM

LEVEL 01 UNIT 05

SUITE AREA	1008.58 SQ.FT.	93.70 SQ.M.
BALCONY AREA	102.36 SQ.FT.	9.51 SQ.M.
TOTAL AREA	1110.94 SQ.FT.	103.21 SQ.M.



FLOOR PLAN 1. All dimensions are in imperial and metric, and measured from finish to finish excluding construction tolerances. 2. All materials, dimensions, and drawings are approximate only. 3. Information is subject to change without notice, at developer's absolute discretion. 4. Actual area may vary from the stated area. 5. Drawings not to scale. 6. All images used are for illustrative purposes only and do not represent the actual size, features, specifications, fittings, and furnishings. 7. The developer reserves the right to make revisions / alterations, at it's absolute discretion, without any liability whatsoever.

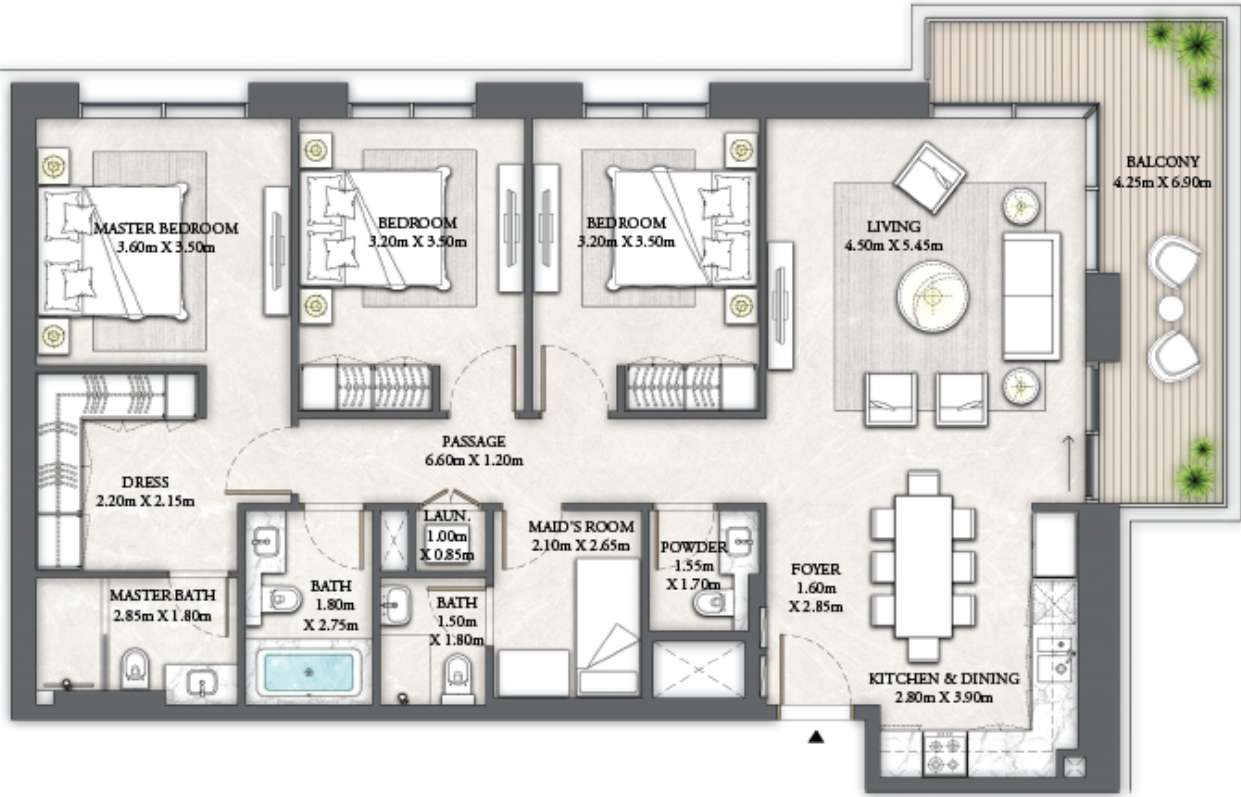
THE COVE

DUBAI CREEK HARBOUR

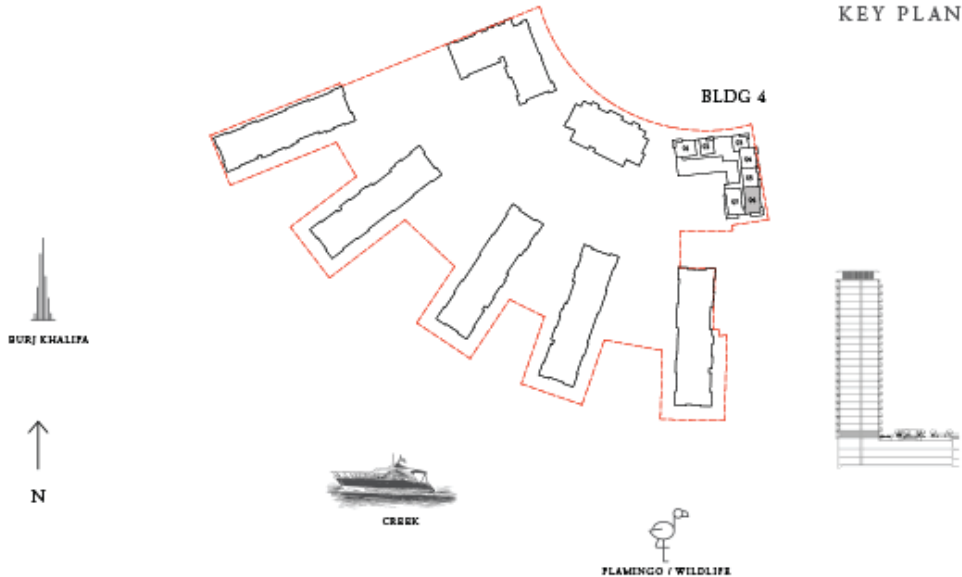
BUILDING 4 3 BEDROOM

LEVEL 01 UNIT 06

SUITE AREA	1398.66 SQ.FT.	129.94 SQ.M.
BALCONY AREA	165.01 SQ.FT.	15.33 SQ.M.
TOTAL AREA	1563.67 SQ.FT.	145.27 SQ.M.



KEY PLAN



FLOOR PLAN 1. All dimensions are in imperial and metric, and measured from finish to finish excluding construction tolerances. 2. All materials, dimensions, and drawings are approximate only. 3. Information is subject to change without notice, at developer's absolute discretion. 4. Actual area may vary from the stated area. 5. Drawings not to scale. 6. All images used are for illustrative purposes only and do not represent the actual size, features, specifications, fittings, and furnishings. 7. The developer reserves the right to make revisions / alterations, at it's absolute discretion, without any liability whatsoever.

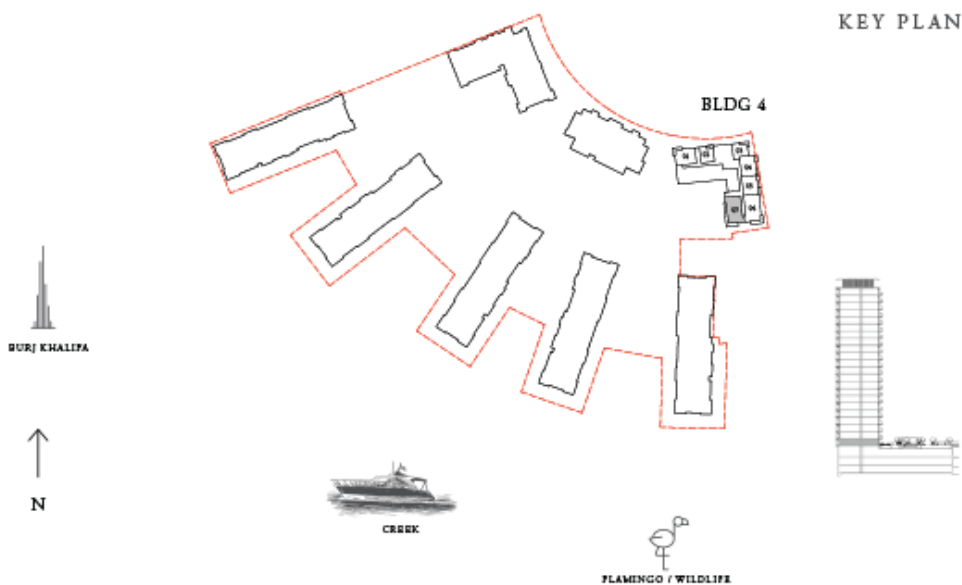
THE COVE

DUBAI CREEK HARBOUR

BUILDING 4 3 BEDROOM

LEVEL 01 UNIT 07

SUITE AREA	1397.69 SQ.FT.	129.85 SQ.M.
BALCONY AREA	412.04 SQ.FT.	38.28 SQ.M.
TOTAL AREA	1809.73 SQ.FT.	168.13 SQ.M.



FLOOR PLAN 1. All dimensions are in imperial and metric, and measured from finish to finish excluding construction tolerances. 2. All materials, dimensions, and drawings are approximate only. 3. Information is subject to change without notice, at developer's absolute discretion. 4. Actual area may vary from the stated area. 5. Drawings not to scale. 6. All images used are for illustrative purposes only and do not represent the actual size, features, specifications, fittings, and furnishings. 7. The developer reserves the right to make revisions / alterations, at it's absolute discretion, without any liability whatsoever.

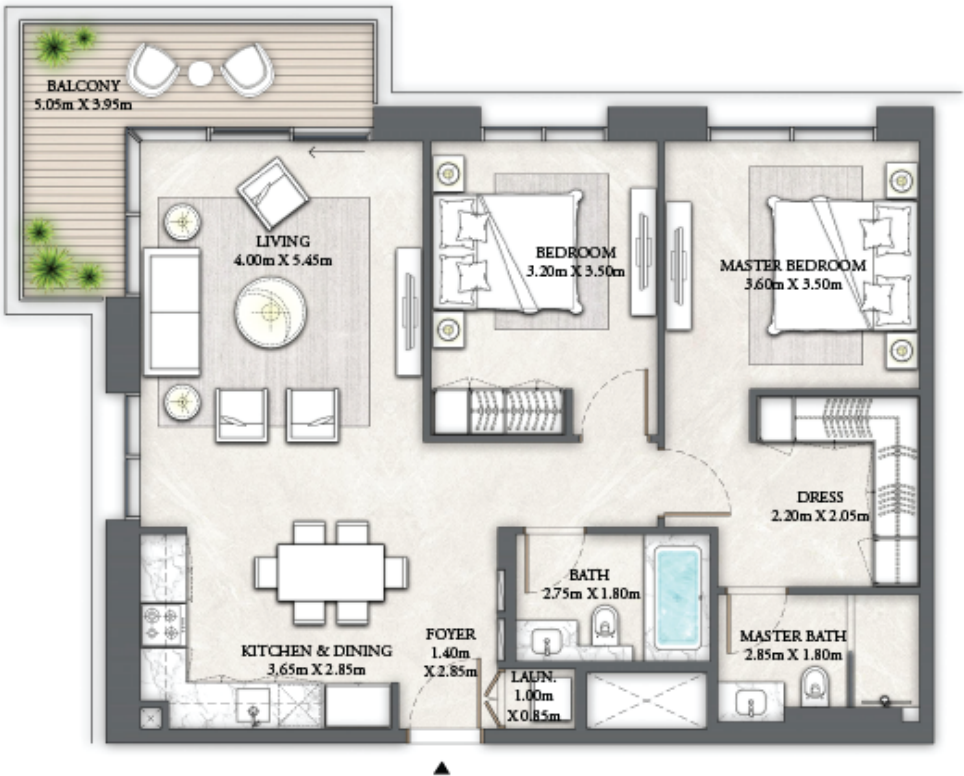
THE COVE

DUBAI CREEK HARBOUR

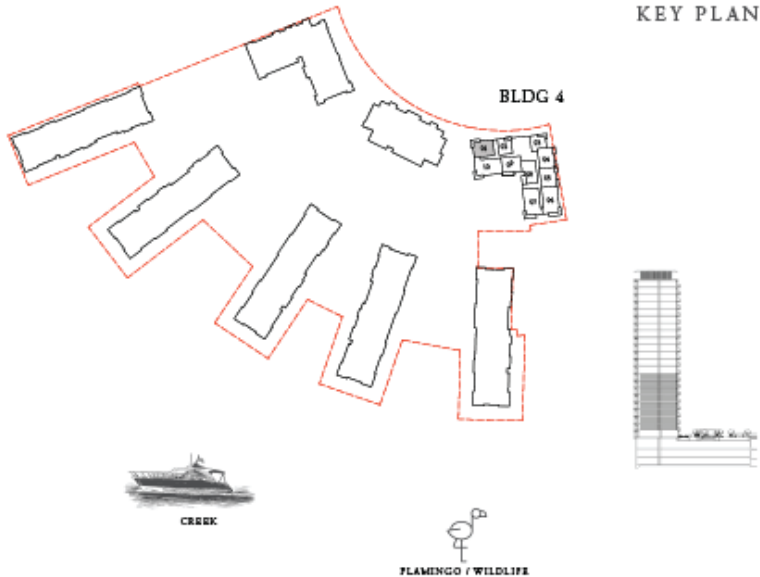
BUILDING 4 2 BEDROOM

LEVELS 02 - 09 UNIT 01

SUITE AREA	1018.05 SQ.FT.	94.58 SQ.M.
BALCONY AREA	120.88 SQ.FT.	11.23 SQ.M.
TOTAL AREA	1138.93 SQ.FT.	105.81 SQ.M.



KEY PLAN



FLOOR PLAN 1. All dimensions are in imperial and metric, and measured from finish to finish excluding construction tolerances. 2. All materials, dimensions, and drawings are approximate only. 3. Information is subject to change without notice, at developer's absolute discretion. 4. Actual area may vary from the stated area. 5. Drawings not to scale. 6. All images used are for illustrative purposes only and do not represent the actual size, features, specifications, fittings, and furnishings. 7. The developer reserves the right to make revisions / alterations, at it's absolute discretion, without any liability whatsoever.

THE COVE

DUBAI CREEK HARBOUR

BUILDING 4 1 BEDROOM

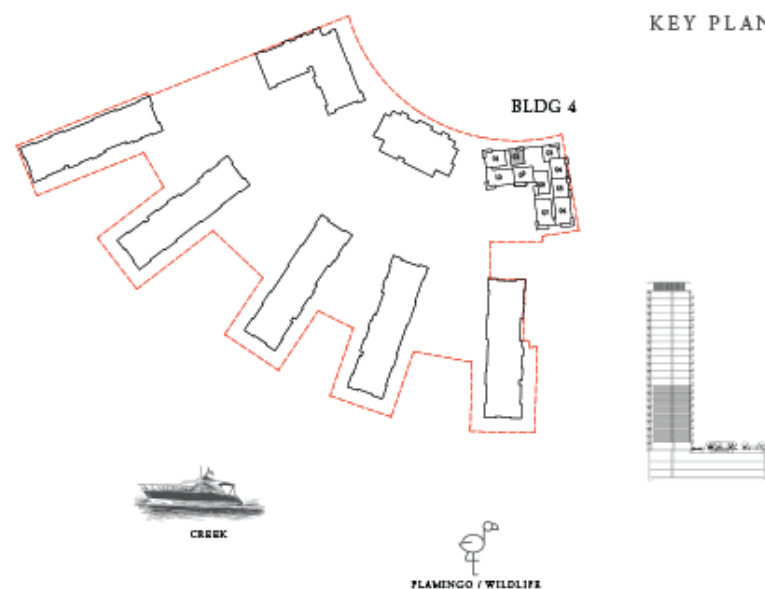
LEVELS 02 - 09

UNIT 02

SUITE AREA	660.04 SQ.FT.	61.32 SQ.M.
BALCONY AREA	78.15 SQ.FT.	7.26 SQ.M.
TOTAL AREA	738.19 SQ.FT.	68.58 SQ.M.



KEY PLAN



FLOOR PLAN 1. All dimensions are in imperial and metric, and measured from finish to finish excluding construction tolerances. 2. All materials, dimensions, and drawings are approximate only. 3. Information is subject to change without notice, at developer's absolute discretion. 4. Actual area may vary from the stated area. 5. Drawings not to scale. 6. All images used are for illustrative purposes only and do not represent the actual size, features, specifications, fittings, and furnishings. 7. The developer reserves the right to make revisions / alterations, at it's absolute discretion, without any liability whatsoever.

EMAAR

THE COVE

DUBAI CREEK HARBOUR

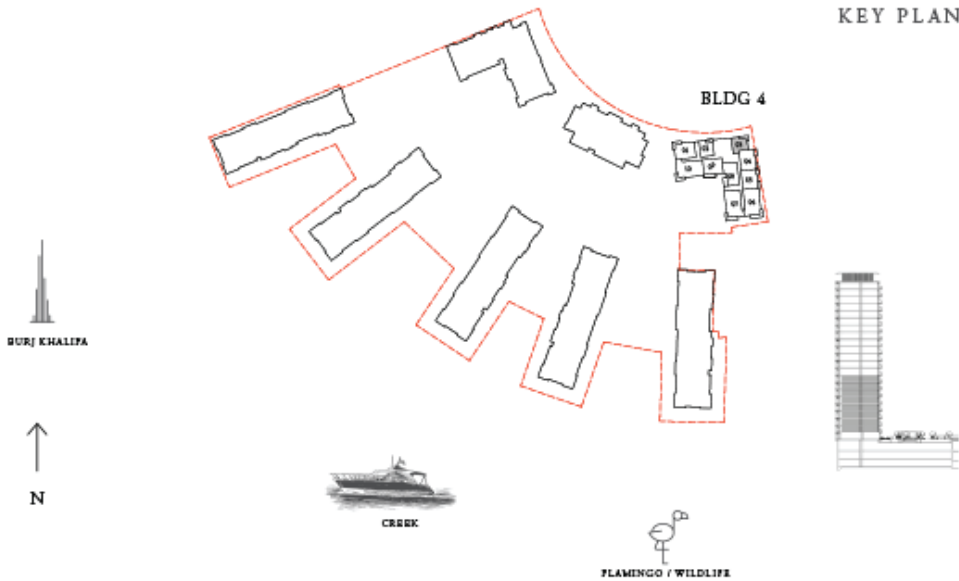
BUILDING 4 1 BEDROOM

LEVELS 02 - 09 UNIT 03

SUITE AREA	674.57 SQ.FT.	62.67 SQ.M.
BALCONY AREA	96.34 SQ.FT.	8.95 SQ.M.
TOTAL AREA	770.91 SQ.FT.	71.62 SQ.M.



KEY PLAN



FLOOR PLAN 1. All dimensions are in imperial and metric, and measured from finish to finish excluding construction tolerances. 2. All materials, dimensions, and drawings are approximate only. 3. Information is subject to change without notice, at developer's absolute discretion. 4. Actual area may vary from the stated area. 5. Drawings not to scale. 6. All images used are for illustrative purposes only and do not represent the actual size, features, specifications, fittings, and furnishings. 7. The developer reserves the right to make revisions / alterations, at it's absolute discretion, without any liability whatsoever.

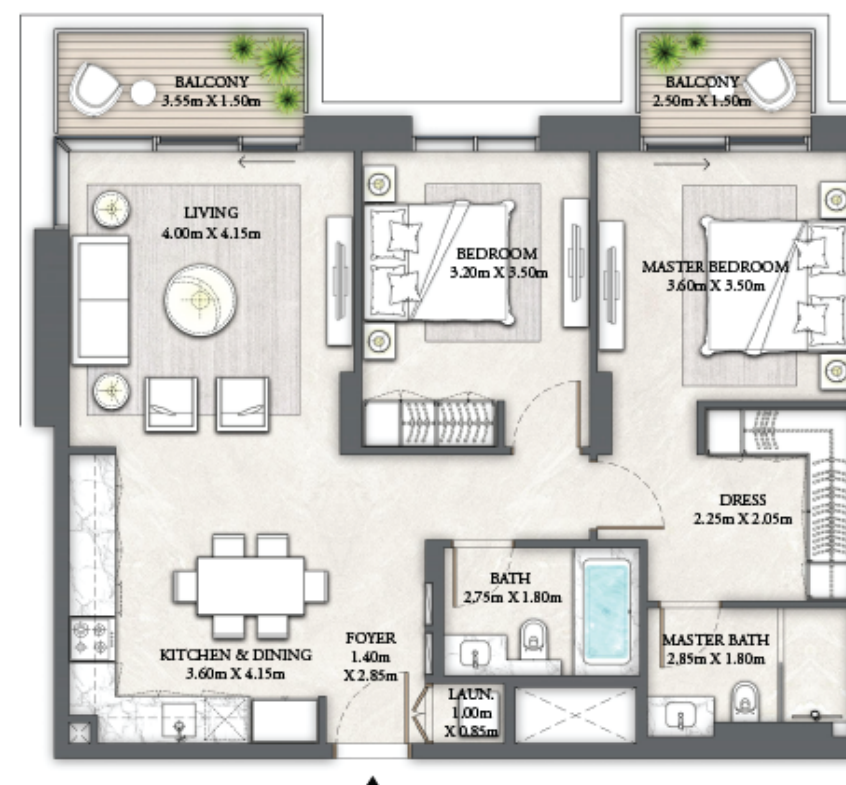
THE COVE

DUBAI CREEK HARBOUR

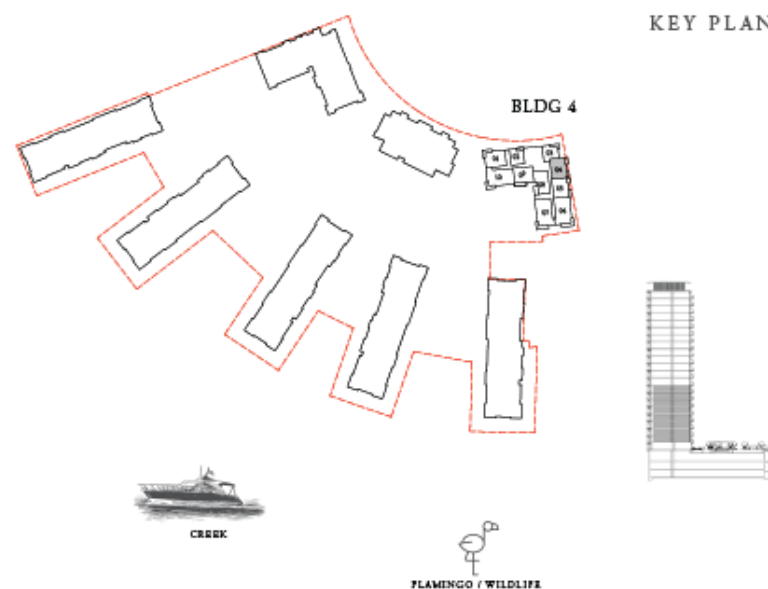
BUILDING 4 2 BEDROOM

LEVELS 02 - 09 UNIT 04

SUITE AREA	1007.18 SQ.FT.	93.57 SQ.M.
BALCONY AREA	99.46 SQ.FT.	9.24 SQ.M.
TOTAL AREA	1106.64 SQ.FT.	102.81 SQ.M.



KEY PLAN



FLOOR PLAN 1. All dimensions are in imperial and metric, and measured from finish to finish excluding construction tolerances. 2. All materials, dimensions, and drawings are approximate only. 3. Information is subject to change without notice, at developer's absolute discretion. 4. Actual area may vary from the stated area. 5. Drawings not to scale. 6. All images used are for illustrative purposes only and do not represent the actual size, features, specifications, fittings, and furnishings. 7. The developer reserves the right to make revisions / alterations, at it's absolute discretion, without any liability whatsoever.

EMAAR

THE COVE

DUBAI CREEK HARBOUR

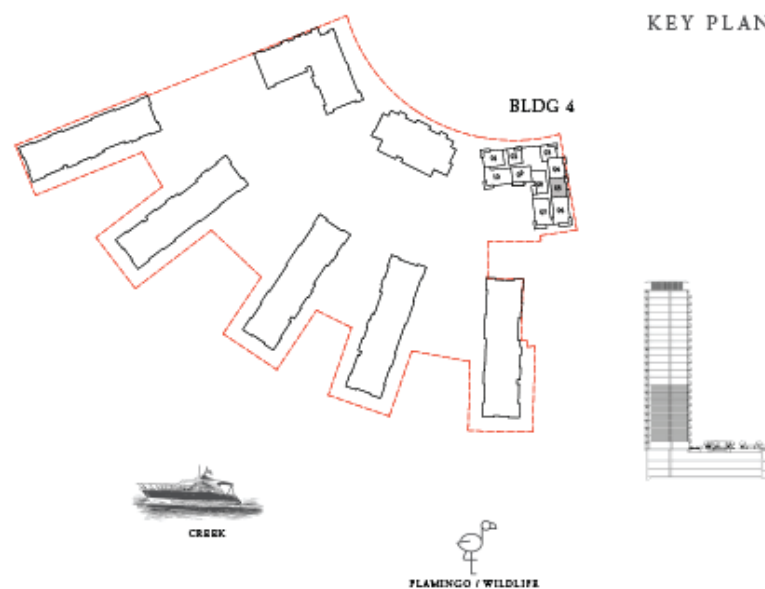
BUILDING 4 2 BEDROOM

LEVELS 02 - 09 UNIT 05

SUITE AREA	1008.58 SQ.FT.	93.70 SQ.M.
BALCONY AREA	102.36 SQ.FT.	9.51 SQ.M.
TOTAL AREA	1110.94 SQ.FT.	103.21 SQ.M.



KEY PLAN



FLOOR PLAN 1. All dimensions are in imperial and metric, and measured from finish to finish excluding construction tolerances. 2. All materials, dimensions, and drawings are approximate only. 3. Information is subject to change without notice, at developer's absolute discretion. 4. Actual area may vary from the stated area. 5. Drawings not to scale. 6. All images used are for illustrative purposes only and do not represent the actual size, features, specifications, fittings, and furnishings. 7. The developer reserves the right to make revisions / alterations, at it's absolute discretion, without any liability whatsoever.

EMAAR

THE COVE

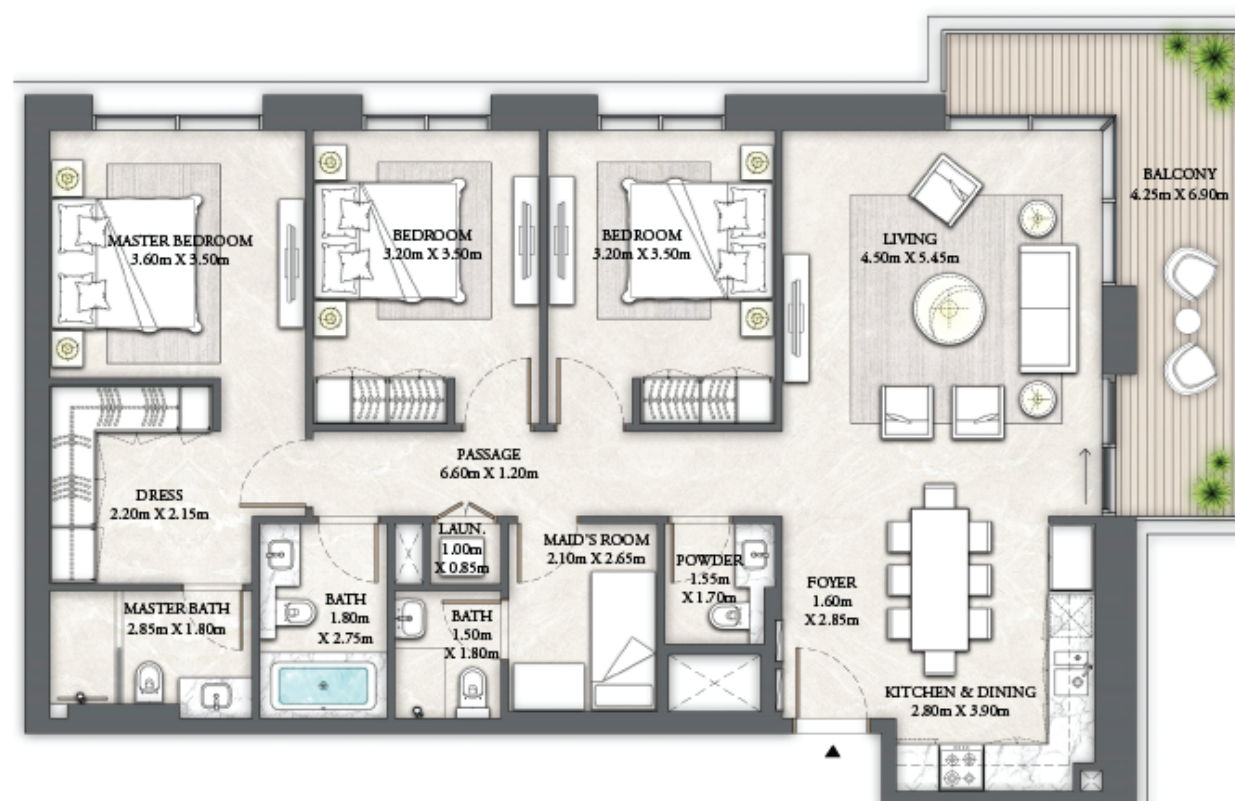
DUBAI CREEK HARBOUR

BUILDING 4 3 BEDROOM

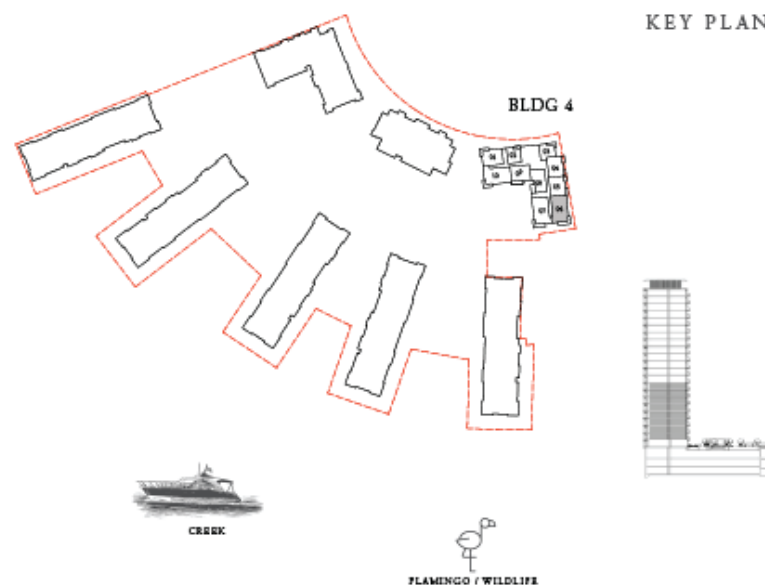
LEVELS 02 - 09

UNIT 06

SUITE AREA	1398.66 SQ.FT.	129.94 SQ.M.
BALCONY AREA	165.01 SQ.FT.	15.33 SQ.M.
TOTAL AREA	1563.67 SQ.FT.	145.27 SQ.M.



KEY PLAN



FLOOR PLAN 1. All dimensions are in imperial and metric, and measured from finish to finish excluding construction tolerances. 2. All materials, dimensions, and drawings are approximate only. 3. Information is subject to change without notice, at developer's absolute discretion. 4. Actual area may vary from the stated area. 5. Drawings not to scale. 6. All images used are for illustrative purposes only and do not represent the actual size, features, specifications, fittings, and furnishings. 7. The developer reserves the right to make revisions / alterations, at it's absolute discretion, without any liability whatsoever.

EMAAR

THE COVE

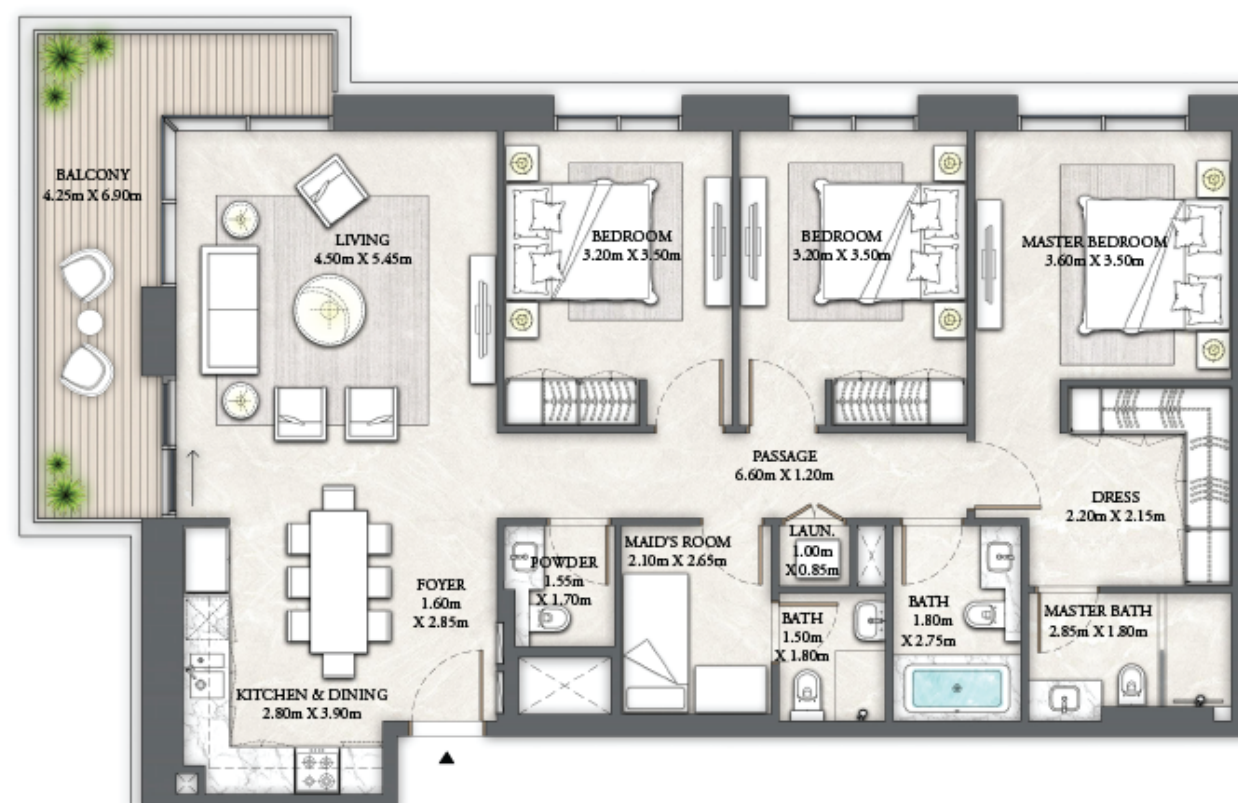
DUBAI CREEK HARBOUR

BUILDING 4 3 BEDROOM

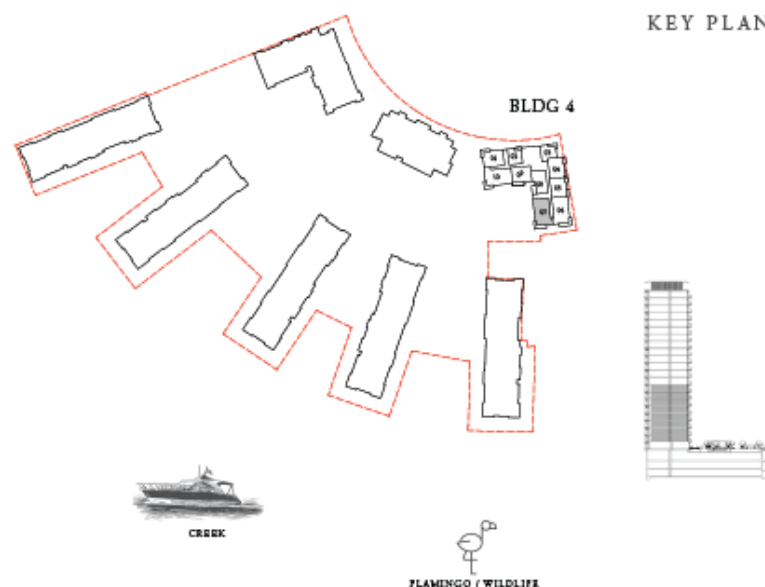
LEVELS 02 - 09

UNIT 07

SUITE AREA	1400.92 SQ.FT.	130.15 SQ.M.
BALCONY AREA	165.01 SQ.FT.	15.33 SQ.M.
TOTAL AREA	1565.93 SQ.FT.	145.48 SQ.M.



KEY PLAN



FLOOR PLAN 1. All dimensions are in imperial and metric, and measured from finish to finish excluding construction tolerances. 2. All materials, dimensions, and drawings are approximate only. 3. Information is subject to change without notice, at developer's absolute discretion. 4. Actual area may vary from the stated area. 5. Drawings not to scale. 6. All images used are for illustrative purposes only and do not represent the actual size, features, specifications, fittings, and furnishings. 7. The developer reserves the right to make revisions / alterations, at it's absolute discretion, without any liability whatsoever.

EMAAR

THE COVE

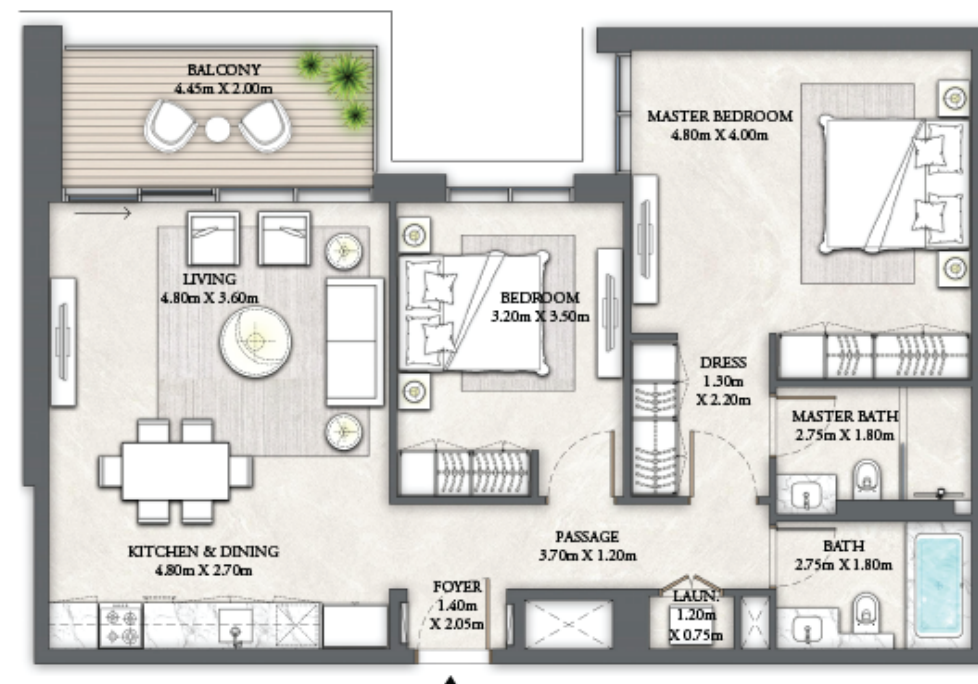
DUBAI CREEK HARBOUR

BUILDING 4 2 BEDROOM

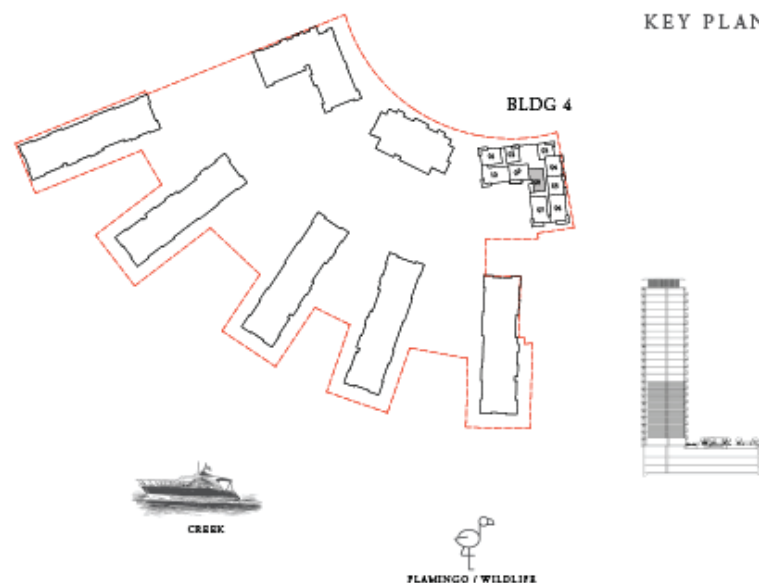
LEVELS 02 - 09

UNIT 08

SUITE AREA	1040.33 SQ.FT.	96.65 SQ.M.
BALCONY AREA	104.73 SQ.FT.	9.73 SQ.M.
TOTAL AREA	1145.06 SQ.FT.	106.38 SQ.M.



KEY PLAN



FLOOR PLAN 1. All dimensions are in imperial and metric, and measured from finish to finish excluding construction tolerances. 2. All materials, dimensions, and drawings are approximate only. 3. Information is subject to change without notice, at developer's absolute discretion. 4. Actual area may vary from the stated area. 5. Drawings not to scale. 6. All images used are for illustrative purposes only and do not represent the actual size, features, specifications, fittings, and furnishings. 7. The developer reserves the right to make revisions / alterations, at it's absolute discretion, without any liability whatsoever.

EMAAR

THE COVE

DUBAI CREEK HARBOUR

BUILDING 4 2 BEDROOM

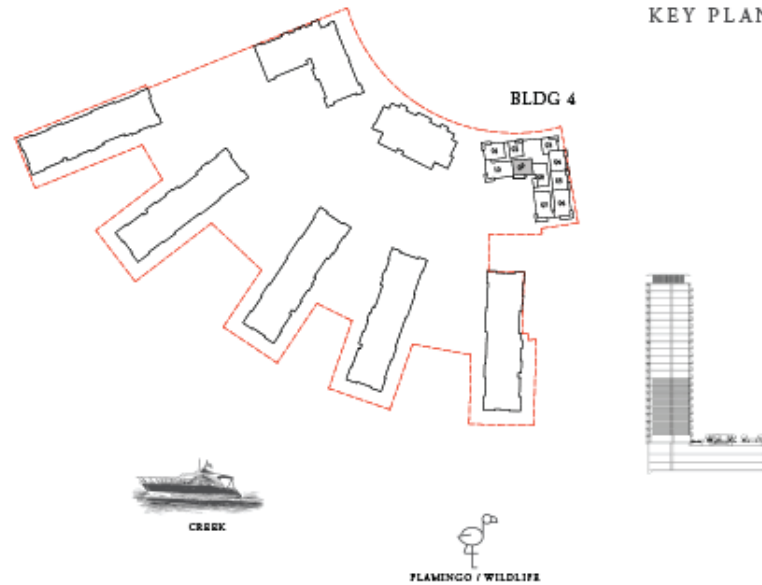
LEVELS 02 - 09

UNIT 09

SUITE AREA	1010.52 SQ.FT.	93.88 SQ.M.
BALCONY AREA	129.06 SQ.FT.	11.99 SQ.M.
TOTAL AREA	1139.58 SQ.FT.	105.87 SQ.M.



KEY PLAN



FLOOR PLAN 1. All dimensions are in imperial and metric, and measured from finish to finish excluding construction tolerances. 2. All materials, dimensions, and drawings are approximate only. 3. Information is subject to change without notice, at developer's absolute discretion. 4. Actual area may vary from the stated area. 5. Drawings not to scale. 6. All images used are for illustrative purposes only and do not represent the actual size, features, specifications, fittings, and furnishings. 7. The developer reserves the right to make revisions / alterations, at it's absolute discretion, without any liability whatsoever.

EMAAR

THE COVE

DUBAI CREEK HARBOUR

BUILDING 4 3 BEDROOM

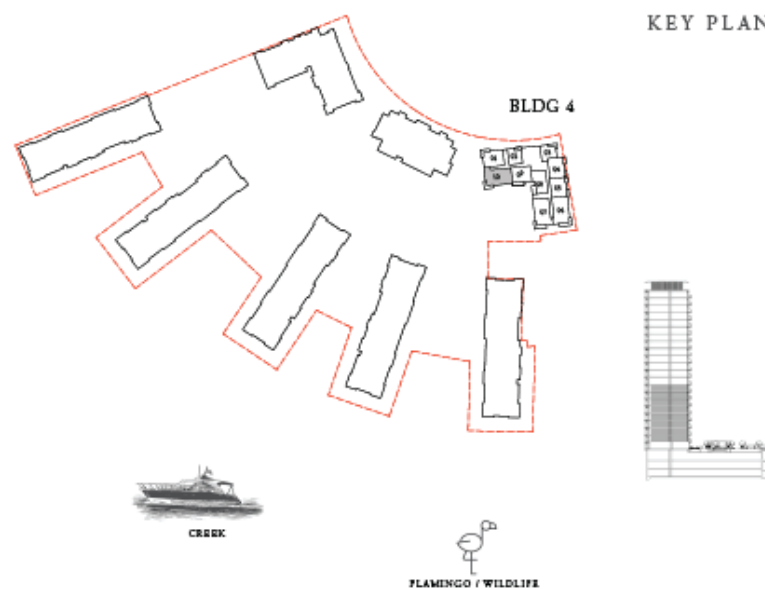
LEVELS 02 - 09

UNIT 10

SUITE AREA	1432.14 SQ.FT.	133.05 SQ.M.
BALCONY AREA	137.02 SQ.FT.	12.73 SQ.M.
TOTAL AREA	1569.16 SQ.FT.	145.78 SQ.M.



KEY PLAN



FLOOR PLAN 1. All dimensions are in imperial and metric, and measured from finish to finish excluding construction tolerances. 2. All materials, dimensions, and drawings are approximate only. 3. Information is subject to change without notice, at developer's absolute discretion. 4. Actual area may vary from the stated area. 5. Drawings not to scale. 6. All images used are for illustrative purposes only and do not represent the actual size, features, specifications, fittings, and furnishings. 7. The developer reserves the right to make revisions / alterations, at it's absolute discretion, without any liability whatsoever.

EMAAR

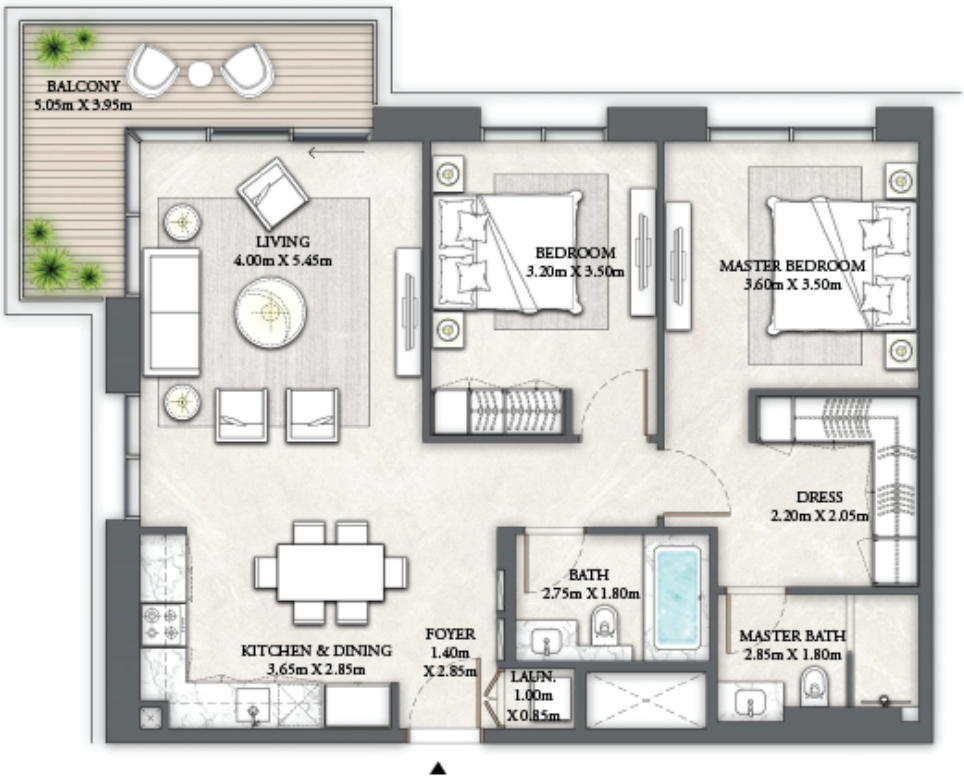
THE COVE

DUBAI CREEK HARBOUR

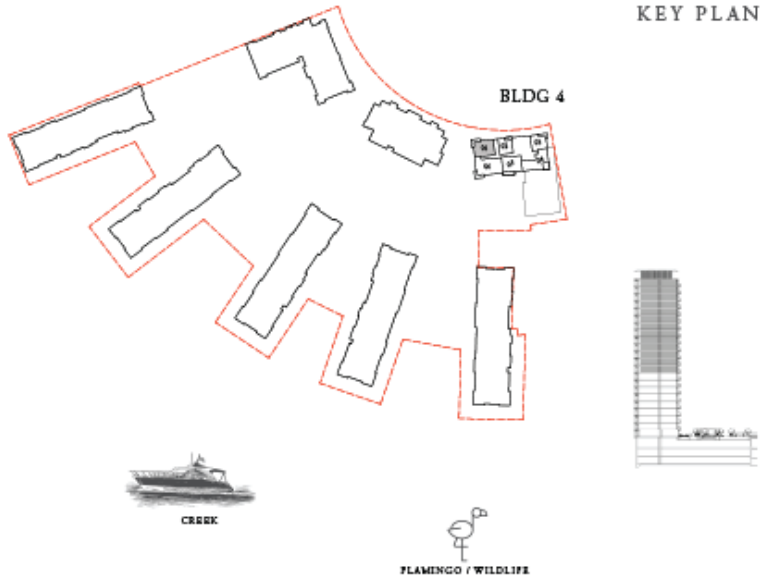
BUILDING 4 2 BEDROOM

LEVELS 10 - 22 UNIT 01

SUITE AREA	1018.05 SQ.FT.	94.58 SQ.M.
BALCONY AREA	120.88 SQ.FT.	11.23 SQ.M.
TOTAL AREA	1138.93 SQ.FT.	105.81 SQ.M.



KEY PLAN



FLOOR PLAN 1. All dimensions are in imperial and metric, and measured from finish to finish excluding construction tolerances. 2. All materials, dimensions, and drawings are approximate only. 3. Information is subject to change without notice, at developer's absolute discretion. 4. Actual area may vary from the stated area. 5. Drawings not to scale. 6. All images used are for illustrative purposes only and do not represent the actual size, features, specifications, fittings, and furnishings. 7. The developer reserves the right to make revisions / alterations, at it's absolute discretion, without any liability whatsoever.

THE COVE

DUBAI CREEK HARBOUR

BUILDING 4 1 BEDROOM

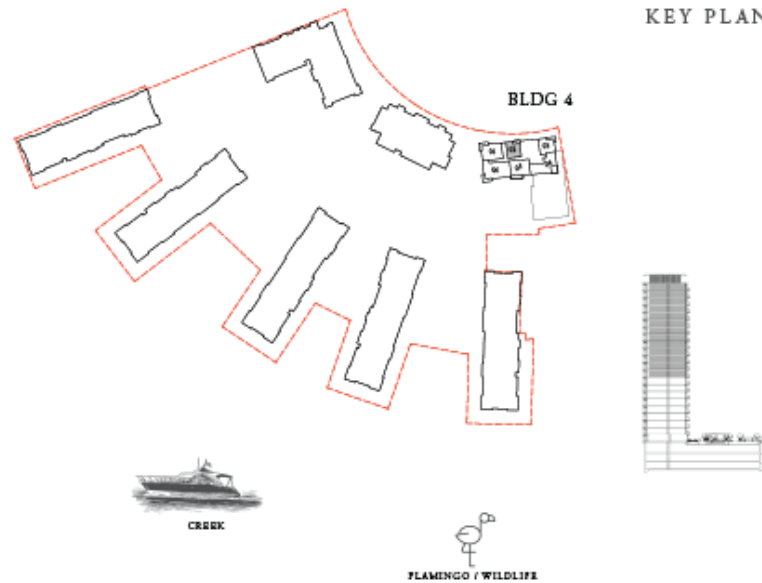
LEVELS 10 - 22

UNIT 02

SUITE AREA	660.04 SQ.FT.	61.32 SQ.M.
BALCONY AREA	78.15 SQ.FT.	7.26 SQ.M.
TOTAL AREA	738.19 SQ.FT.	68.58 SQ.M.



KEY PLAN



FLOOR PLAN 1. All dimensions are in imperial and metric, and measured from finish to finish excluding construction tolerances. 2. All materials, dimensions, and drawings are approximate only. 3. Information is subject to change without notice, at developer's absolute discretion. 4. Actual area may vary from the stated area. 5. Drawings not to scale. 6. All images used are for illustrative purposes only and do not represent the actual size, features, specifications, fittings, and furnishings. 7. The developer reserves the right to make revisions / alterations, at it's absolute discretion, without any liability whatsoever.

EMAAR

THE COVE

DUBAI CREEK HARBOUR

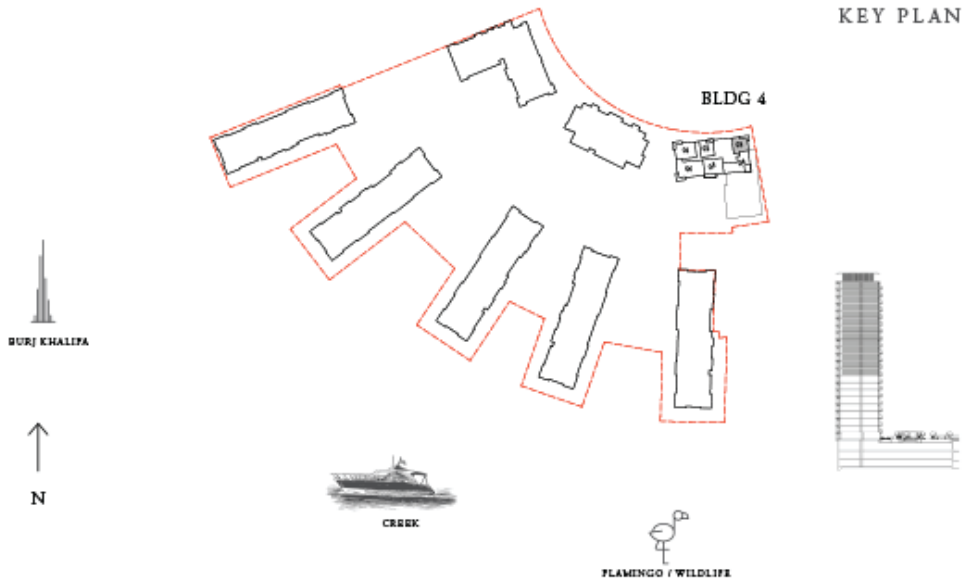
BUILDING 4 1 BEDROOM

LEVELS 10 - 22 UNIT 03

SUITE AREA	674.57 SQ.FT.	62.67 SQ.M.
BALCONY AREA	96.34 SQ.FT.	8.95 SQ.M.
TOTAL AREA	770.91 SQ.FT.	71.62 SQ.M.



KEY PLAN



FLOOR PLAN 1. All dimensions are in imperial and metric, and measured from finish to finish excluding construction tolerances. 2. All materials, dimensions, and drawings are approximate only. 3. Information is subject to change without notice, at developer's absolute discretion. 4. Actual area may vary from the stated area. 5. Drawings not to scale. 6. All images used are for illustrative purposes only and do not represent the actual size, features, specifications, fittings, and furnishings. 7. The developer reserves the right to make revisions / alterations, at it's absolute discretion, without any liability whatsoever.

THE COVE

DUBAI CREEK HARBOUR

BUILDING 4 2 BEDROOM

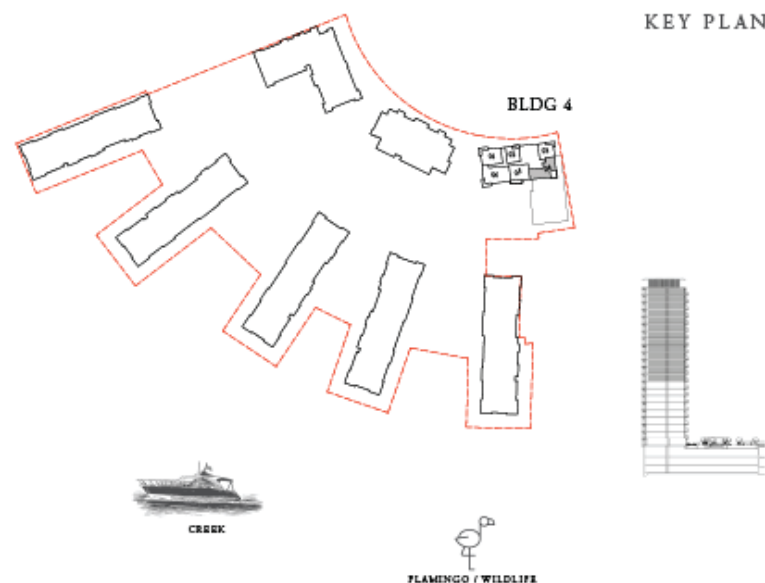
LEVELS 10 - 22

UNIT 04

SUITE AREA	1091.78 SQ.FT.	101.43 SQ.M.
BALCONY AREA	141.87 SQ.FT.	13.18 SQ.M.
TOTAL AREA	1233.65 SQ.FT.	114.61 SQ.M.



KEY PLAN



FLOOR PLAN 1. All dimensions are in imperial and metric, and measured from finish to finish excluding construction tolerances. 2. All materials, dimensions, and drawings are approximate only. 3. Information is subject to change without notice, at developer's absolute discretion. 4. Actual area may vary from the stated area. 5. Drawings not to scale. 6. All images used are for illustrative purposes only and do not represent the actual size, features, specifications, fittings, and furnishings. 7. The developer reserves the right to make revisions / alterations, at it's absolute discretion, without any liability whatsoever.

EMAAR

THE COVE

DUBAI CREEK HARBOUR

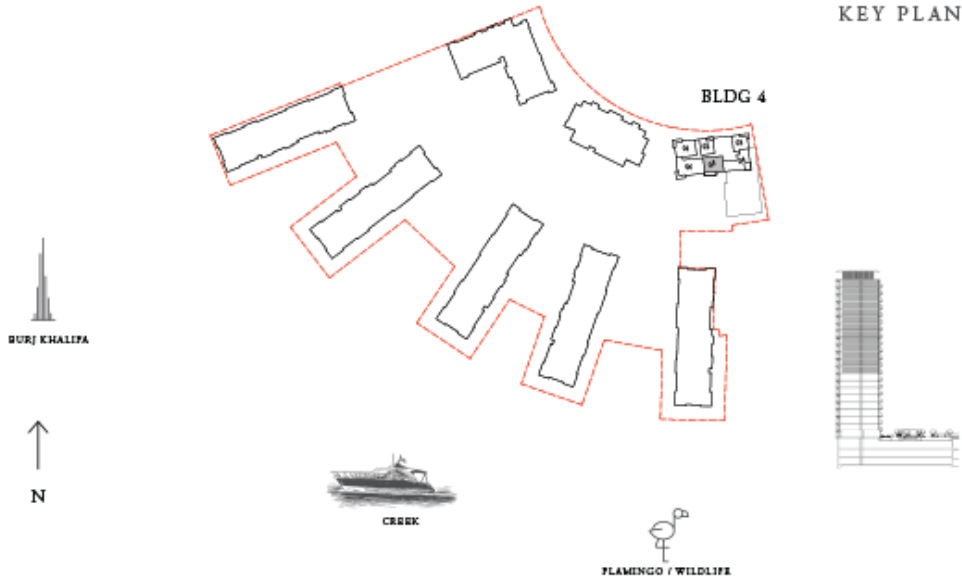
BUILDING 4 2 BEDROOM

LEVELS 10 - 22 UNIT 05

SUITE AREA	1010.52 SQ.FT.	93.88 SQ.M.
BALCONY AREA	129.06 SQ.FT.	11.99 SQ.M.
TOTAL AREA	1139.58 SQ.FT.	105.87 SQ.M.



KEY PLAN



FLOOR PLAN 1. All dimensions are in imperial and metric, and measured from finish to finish excluding construction tolerances. 2. All materials, dimensions, and drawings are approximate only. 3. Information is subject to change without notice, at developer's absolute discretion. 4. Actual area may vary from the stated area. 5. Drawings not to scale. 6. All images used are for illustrative purposes only and do not represent the actual size, features, specifications, fittings, and furnishings. 7. The developer reserves the right to make revisions / alterations, at it's absolute discretion, without any liability whatsoever.

THE COVE

DUBAI CREEK HARBOUR

BUILDING 4 3 BEDROOM

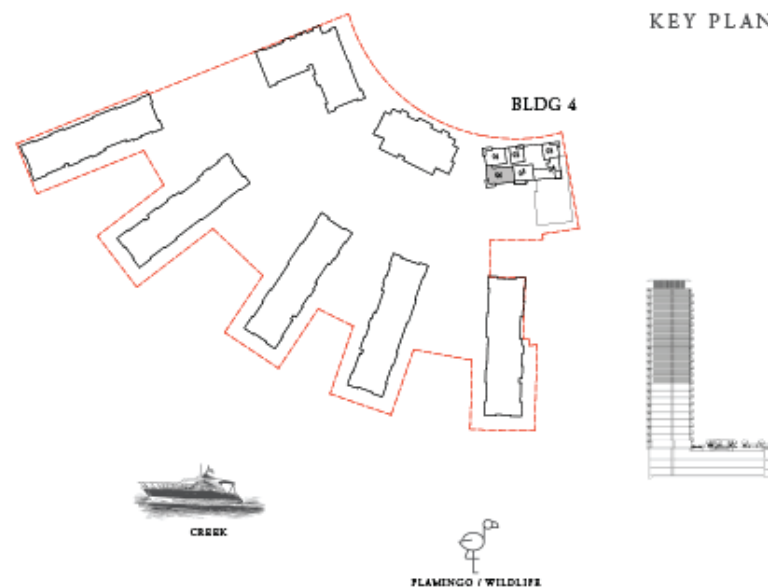
LEVELS 10 - 22

UNIT 06

SUITE AREA	1432.14 SQ.FT.	133.05 SQ.M.
BALCONY AREA	137.02 SQ.FT.	12.73 SQ.M.
TOTAL AREA	1569.16 SQ.FT.	145.78 SQ.M.



KEY PLAN



FLOOR PLAN 1. All dimensions are in imperial and metric, and measured from finish to finish excluding construction tolerances. 2. All materials, dimensions, and drawings are approximate only. 3. Information is subject to change without notice, at developer's absolute discretion. 4. Actual area may vary from the stated area. 5. Drawings not to scale. 6. All images used are for illustrative purposes only and do not represent the actual size, features, specifications, fittings, and furnishings. 7. The developer reserves the right to make revisions / alterations, at it's absolute discretion, without any liability whatsoever.

EMAAR

THE COVE

DUBAI CREEK HARBOUR

FOR MORE INFORMATION PLEASE CONTACT



REAL ESTATE

STAY AHEAD, INVEST SMART

 +971 55 476 7630
 +971 4 368 7878
 info@afsrealestate.com
 www.afsrealestate.com



DUBRICKS

POSSIBILITIES ARE LIMITLESS

 +971 50 674 2020
 +971 4 368 7878
 info@dubricks.com
 www.dubricks.com

EMAAR